


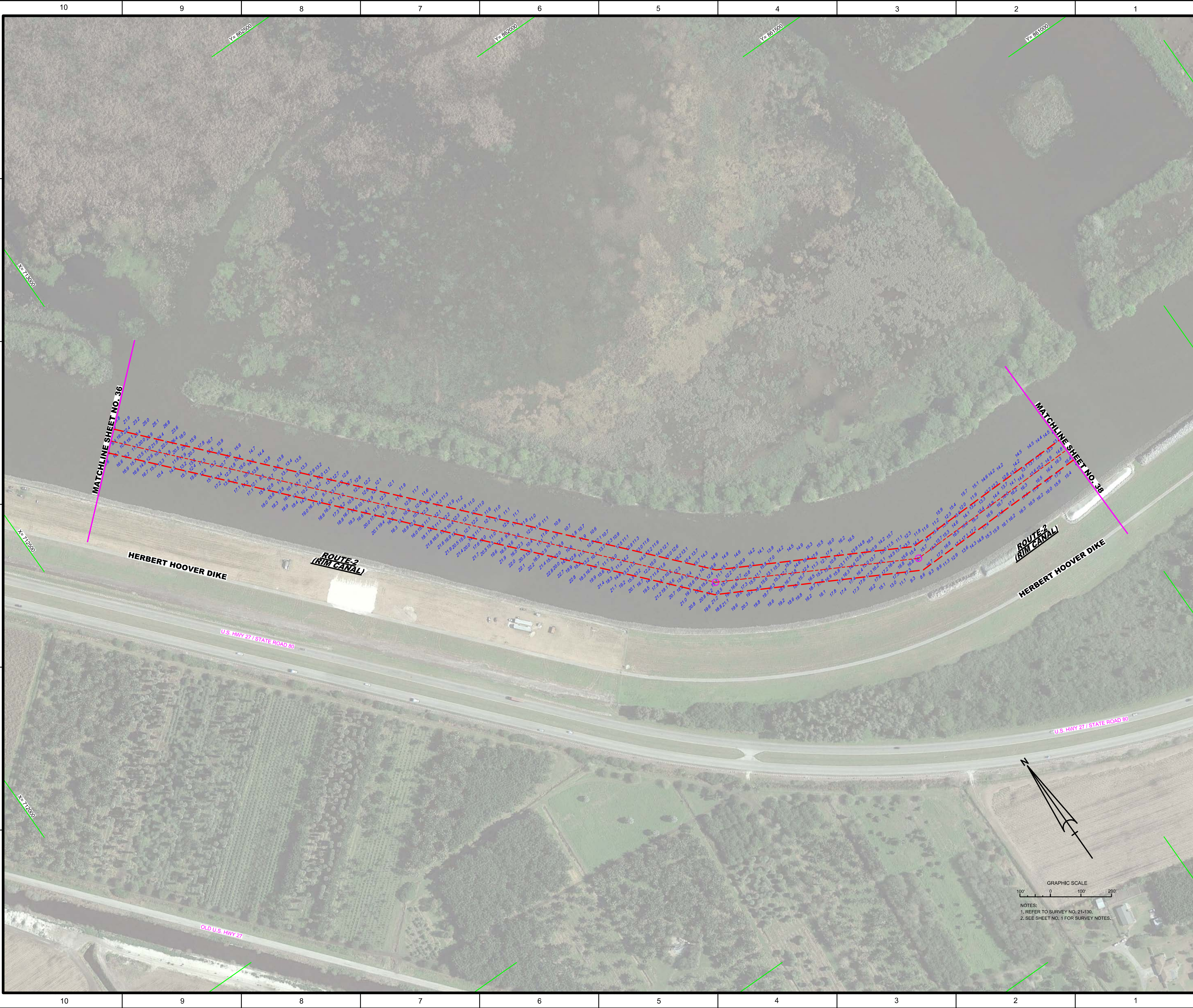
MAP LABEL	AIDS TO NAVIGATION	PLANE COORDINATES		LATITUDE	LONGITUDE
		X	Y		
R"92A"	DBN-92A (09/22)	712,431	882,349	26°42'21.66"	80°49'39.54"

GRAPHIC SCALE
 100' 0 100' 200'
 NOTES:
 1. REFER TO SURVEY NO. 21-130.
 2. SEE SHEET NO. 1 FOR SURVEY NOTES.



US Army Corps of Engineers
 Jacksonville District
 SAFETY ON THIS JOB
 DEPENDS ON YOU

DESIGNED BY: WRM DRAWN BY: WRM CHECKED BY: WRM DATE: SEP 2022	DESIGNED BY: GMR DRAWN BY: GMR CHECKED BY: GMR DATE: SEP 2022
DEPARTMENT OF THE ARMY JACKSONVILLE DISTRICT, CORPS OF ENGINEERS JACKSONVILLE, FLORIDA	
OKECHOBEE WATERWAY, FLORIDA HYDROGRAPHIC EXAM SURVEY FY21 6 AND 8-FOOT PROJECT ROUTE-2 (RIM CANAL) PLAN	
Scale: AS SHOWN Drawing no. 36 SHEET 36 OF 133	



<p>US Army Corps of Engineers Jacksonville District</p>	
<p>SAFETY ON THIS JOB DEPENDS ON YOU</p>	
<p>Client: GHR</p>	<p>Drawn by: WRM</p>
<p>Designed by: WRM</p>	<p>Checked by: WRM</p>
<p>Project No: 21-130-6-BS-BR10A.DGN</p>	<p>File Name: 21-130-6-BS-BR10A.DGN</p>
<p>Project Name: OKEECHOBEE WATERWAY, FLORIDA</p>	<p>Project Title: HYDROGRAPHIC EXAM SURVEY FY21</p>
<p>Project Description: ROUTE 2 (RIM CANAL)</p>	<p>Project Type: PLAN</p>
<p>Scale: AS SHOWN</p>	<p>Drawing no. 37</p>
<p>SHEET 37 OF 133</p>	<p>DATE: SEP 2022</p>

